



***TOWARDS HEALING***

## **Towards Healing**

A Catholic Church response to Institutional,  
Clerical and Religious abuse



# Eighteen years of listening and learning



**TOWARDS HEALING**

## **Towards Healing**

A Catholic Church response to Institutional,  
Clerical and Religious abuse



# Introduction



*TOWARDS HEALING*

**Melissa Darmody**  
Clinical Director

**Survivors**

# Our stakeholders

# Our stakeholders

Survivors  
**Family members  
of survivors**

# Our stakeholders

Survivors  
Family members  
of survivors

**Survivor groups**

# Our stakeholders

Survivors

Family members  
of survivors

Survivor groups

**Clinical staff**

# Our stakeholders

Survivors

Family members  
of survivors

Survivor groups

Clinical staff

**Funders**



# Our stakeholders

**Other support  
services in the  
community**

Survivors

Family members  
of survivors

Survivor groups

Clinical staff

Funders

## Our stakeholders

**Government  
agencies**

Other support  
services in the  
community

Funders

Survivors

Family members  
of survivors

Survivor groups

Clinical staff

## Our stakeholders

**Religious**

Government  
agencies

Other support  
services in the  
community

Funders

Survivors

Family members  
of survivors

Survivor groups

Clinical staff

# The history of Industrial Schools in Ireland



## The history of Industrial Schools in Ireland

The main use of Industrial Schools in Ireland 1936 -1970

According to the Commission to Inquire into Child Abuse

**“Physical and emotional abuse and neglect were features of the institutions. Sexual abuse occurred in many of them, particularly boy’s institutions”**







## The history of Industrial Schools in Ireland

The main use of Industrial Schools in Ireland 1936 -1970

According to the Commission to Inquire into Child Abuse

**“Physical and emotional abuse and neglect were features of the institutions. Sexual abuse occurred in many of them, particularly boy’s institutions”**

**State-funded/Catholic Church managed services**

## The history of Industrial Schools in Ireland

# Society awareness raised

**1996 RTE Programme Dear Daughter**  
Louis Lentin

**1999 RTE Programme States of Fear**  
Mary Raftery



## The history of Industrial Schools in Ireland

# Society awareness raised

1996 RTE Programme Dear Daughter  
Louis Lentin

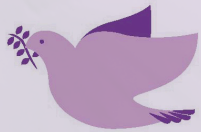
1999 RTE Programme States of Fear  
Mary Raftery

These programmes raised the public  
consciousness of the conditions that  
children lived under within  
State/Church Care

The history of Industrial Schools  
in Ireland

**Society awareness  
raised by Irish National  
Broadcaster (RTE)**

# Response



*TOWARDS HEALING*



## Catholic Church Response

In 1997 the Mercy Sisters established, what was initially envisioned as a short term, support telephone helpline for people impacted in the Industrial schools.

## Catholic Church Response

In 1997 the Mercy Sisters established, what was initially envisioned as a short term, support telephone helpline for people impacted in the Industrial schools.

As the awareness of the gravity of the problem became clear, **CORI** (Conference of Religious in Ireland) set up **Faoiseamh "Relief From Pain"**. This service provided a telephone helpline and referral to face to face counselling for industrial school services and their families.

## Irish State Response

In 1999, then Taoiseach (Prime Minister) Bertie Ahern made a public statement and commitment in relation to the Industrial Schools;

## Irish State Response

In 1999, then Taoiseach (Prime Minister) Bertie Ahern made a public statement and commitment in relation to the Industrial Schools;

### **An Apology by the State**

## Irish State Response

In 1999, then Taoiseach (Prime Minister) Bertie Ahern made a public statement and commitment in relation to the Industrial Schools;

An Apology by the State

**Commitment to set up an independent Inquiry**



## Irish State Response

In 1999, then Taoiseach (Prime Minister) Bertie Ahern made a public statement and commitment in relation to the Industrial Schools;

An Apology by the State

Commitment to set up an independent Inquiry

**Redress Board for compensation**

## Irish State Response

In 1999, then Taoiseach (Prime Minister) Bertie Ahern made a public statement and commitment in relation to the Industrial Schools;

An Apology by the State

Commitment to set up an independent Inquiry

Redress Board for compensation

**National Counselling Service**

## Evolution of Towards Healing

The original remit was to respond to Industrial School survivors and their families. Over the years there has been requests for services from clients who have been harmed within a Diocesan or day/boarding Catholic school context. In 2009 Review of Service recommended the closing of Faoiseamh and the opening of Towards Healing, **"One Church"** response.

## Evolution of Towards Healing

The original remit was to respond to Industrial School survivors and their families. Over the years there has been requests for services from clients who have been harmed within a Diocesan or day/boarding Catholic school context. In 2009 Review of Service recommended the closing of Faoiseamh and the opening of Towards Healing, “**One Church**” response.

### 1 Change of Name

## Evolution of Towards Healing

The original remit was to respond to Industrial School survivors and their families. Over the years there has been requests for services from clients who have been harmed within a Diocesan or day/boarding Catholic school context. In 2009 Review of Service recommended the closing of Faoiseamh and the opening of Towards Healing, “**One Church**” response.

### 1 Change of Name

### 2 Bishops Conference



## Evolution of Towards Healing

The original remit was to respond to Industrial School survivors and their families. Over the years there has been requests for services from clients who have been harmed within a Diocesan or day/boarding Catholic school context. In 2009 Review of Service recommended the closing of Faoiseamh and the opening of Towards Healing, “**One Church**” response.

- 1 Change of Name
- 2 Bishops Conference
- 3 Choice of Service

## Towards Healing: February 2011

### ■ Helpline Support

## Towards Healing: February 2011

- **Helpline Support**
- **Referral to Face to Face counselling for survivors and their families:**  
80 and 20 session Model.

## Towards Healing: February 2011

- **Helpline Support**
- **Referral to Face to Face counselling for survivors and their families:**  
80 and 20 session Model.
- **Bridging Service: Advocacy**

## Towards Healing: February 2011

- **Helpline Support**
- **Referral to Face to Face counselling for survivors and their families:**  
80 and 20 session Model.
- **Bridging Service: Advocacy**
- **Parent Coaching**

## Towards Healing: February 2011

### ■ Facilitated Listening Meeting/Restorative

## Towards Healing: February 2011

- Facilitated Listening Meeting/Restorative
- Telephone counselling



## Towards Healing: February 2011

- **Facilitated Listening Meeting/Restorative**
- **Telephone counselling**
- **Practical Workshops:**  
Self care, assertiveness, parenting,  
sexuality, anger management.

## Towards Healing: February 2011

- **Facilitated Listening Meeting/Restorative**
- **Telephone counselling**
- **Practical Workshops:**  
Self care, assertiveness, parenting, sexuality, anger management.
- **Friendly Call**

## Towards Healing: February 2011

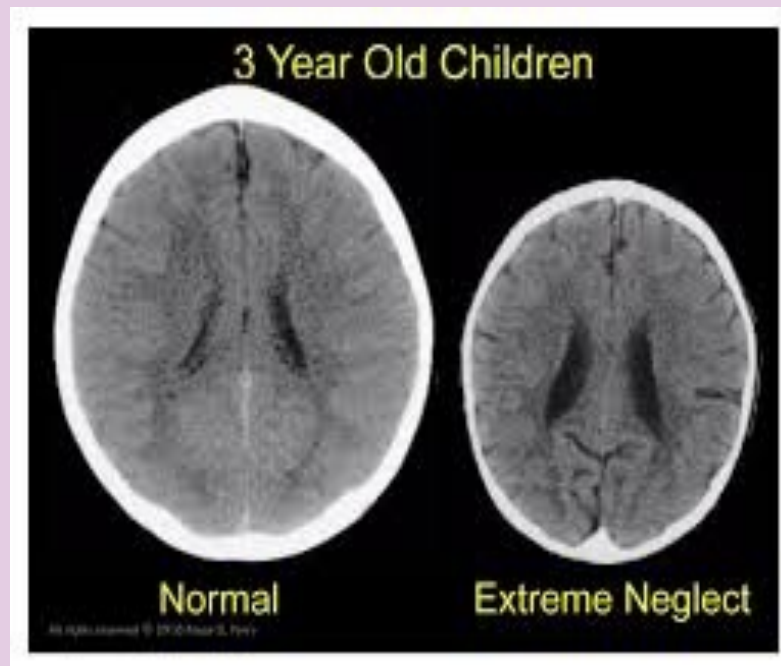
- **Facilitated Listening Meeting/Restorative**
- **Telephone counselling**
- **Practical Workshops:**  
Self care, assertiveness, parenting, sexuality, anger management.
- **Friendly Call**
- **Group work:**  
Therapeutic for Survivors

# Survivors



*TOWARDS HEALING*

## Childhood Trauma & The Brain



**Dr. Bruce Perry,**  
Psychiatrist, Child Trauma Academy

## The issues of our Service Users

- Lack of Trust
- Isolation
- Addiction/Mental Health
- Very angry and very sad
- Difficulty in Regulating self
- Inability to establish healthy relationships
- Irrational thought process

## What Survivors look for

- Listened to, “to tell my story”,  
acknowledged, believed



## What Survivors look for

- Listened to, “to tell my story”,  
acknowledged, believed
- **Apology**

## What Survivors look for

- Listened to, “to tell my story”,  
acknowledged, believed
- Apology
- Counselling “to move on with  
my life” “stop living in the past”

## What Survivors look for

- Listened to, “to tell my story”, acknowledged, believed
- Apology
- Counselling “to move on with my life” “stop living in the past”
- **To be assured that children are now safe**

## What Survivors look for

- Listened to, “to tell my story”,  
acknowledged, believed
- Apology
- Counselling “to move on with  
my life” “stop living in the past”
- To be assured that children are  
now safe
- **Financial Compensation**

## What Survivors look for

- Listened to, “to tell my story”, acknowledged, believed
- Apology
- Counselling “to move on with my life” “stop living in the past”
- To be assured that children are now safe
- Financial Compensation
- The Crime to be punished



# Responses in Ireland



*TOWARDS HEALING*



## Responses in Ireland: **Towards Healing**

- Listened to, “to tell my story”,  
acknowledged, believed
- Apology
- Counselling “to move on with  
my life” “stop living in the past”



Responses in Ireland:  
**National Board of Saveguarding Children  
in the Catholic Church**

- **To be assured that children  
are now safe**

## Responses in Ireland: **Legal**

- **Financial compensation**
- **Crime to be punished**



# Restorative Justice



*TOWARDS HEALING*



## Facilitated Listening Meetings (Restorative Justice)



## Facilitated Listening Meetings (Restorative Justice)

**Toward Healing** opened with a commitment to establish a Restorative Justice Programme when it opened in February 2011.

## Facilitated Listening Meetings (Restorative Justice)

**Toward Healing** opened with a commitment to establish a Restorative Justice Programme when it opened in February 2011.

In November 2011 it received training by **Janine Geske**, (former Wisconsin Supreme Court Justice and Distinguished Professor of Law at Marquette University).

## Facilitated Listening Meetings (Restorative Justice)

**Toward Healing** opened with a commitment to establish a Restorative Justice Programme when it opened in February 2011

In November 2011 it received training by **Janine Geske**, (former Wisconsin Supreme Court Justice and Distinguished Professor of Law at Marquette University).

A Review of Service was completed in 2013 by Independent reviewer **Dr. Patricia Kennedy**.



## Facilitated Listening Meetings (Restorative Justice)

**Toward Healing** opened with a commitment to establish a Restorative Justice Programme when it opened in February 2011

In November 2011 it received training by **Janine Geske**, (former Wisconsin Supreme Court Justice and Distinguished Professor of Law at Marquette University).

A Review of Service was completed in 2013 by Independent reviewer **Dr. Patricia Kennedy**

The findings were positive, with some changes regarding communication and funding recommended.

## Restorative Justice

### WHAT IT IS **NOT**

**Criminal Process**

**Financial Compensation**

**Looking for blame  
or punishment**

**Abusive/Threatening**

**Unsafe**

**Fast**

**Facilitator must always be the “Boss of Safety”**

## Restorative Justice

WHAT IT IS <b>NOT</b>	WHAT IT <b>IS</b>
Criminal Process	Slow
Financial Compensation	Reflective
Looking for blame or punishment	Respectful
Abusive/Threatening	Challenging
Unsafe	Uncertain of outcome: no guarantees
Fast	Powerful

**Facilitator must always be the “Boss of Safety”**

## Restorative Justice Process

### ■ Discussion with Survivor: “who to invite”

## Restorative Justice Process

- Discussion with Survivor: “who to invite”
- Signed consent, letter of information to be signed

## **Restorative Justice Process**

- **Discussion with Survivor: “who to invite”**
- **Signed consent, letter of information to be signed**
- **Contact Church representative to “invite” to progress, letter of information to be signed**

## Restorative Justice Process

- Discussion with Survivor: “who to invite”
- Signed consent, letter of information to be signed
- Contact Church representative to “invite” to progress, letter of information to be signed
- Facilitator appointed

## **Restorative Justice Process**

- **Discussion with Survivor: “who to invite”**
- **Signed consent, letter of information to be signed**
- **Contact Church representative to “invite” to progress, letter of information to be signed**
- **Facilitator appointed**
- **Pre-meeting with Survivor**



## Restorative Justice Process

- Discussion with Survivor: “who to invite”
- Signed consent, letter of information to be signed
- Contact Church representative to “invite” to progress, letter of information to be signed
- Facilitator appointed
- Pre-meeting with Survivor
- Pre-meeting with Church representative

## Restorative Justice Process

- Discussion with Survivor: “who to invite”
- Signed consent, letter of information to be signed
- Contact Church representative to “invite” to progress, letter of information to be signed
- Facilitator appointed
- Pre-meeting with Survivor
- Pre-meeting with Church representative
- Group meeting

## **Restorative Justice Process**

- **Discussion with Survivor: “who to invite”**
- **Signed consent, letter of information to be signed**
- **Contact Church representative to “invite” to progress, letter of information to be signed**
- **Facilitator appointed**
- **Pre-meeting with Survivor**
- **Pre-meeting with Church representative**
- **Group meeting**
- **Follow up Support for all parties**

## Restorative Justice Process

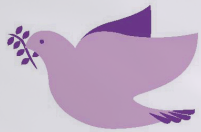
**Forty** cases have expressed an interest in this programme. **Four** of those forty after initial consultation decide to take up another process. Eleven individuals have completed the full process.

**Seventeen** individuals started the process but paused it.

**Towards Healing** currently has **eight** individuals at some stage in the process.



# Recommendations and Reflections



*TOWARDS HEALING*

## **Recommendations**

**Continue with Church/Lay Professional collaboration in addressing challenges.**

## Recommendations

Continue with Church/Lay Professional collaboration in addressing challenges.

**Support to all Church personal: Leaders, on the ground priest and religious, lay faithful. The ripple of impact.**

## Recommendations

Continue with Church/Lay Professional collaboration in addressing challenges

Support to all Church personal: Leaders, on the ground priest and religious, lay faithful. The ripple of impact.

**Systematic way for survivors who wish to explore finance compensation to progress with this. Non defensive processes.**



## Recommendations

Continue with Church/Lay Professional collaboration in addressing challenges

Support to all Church personal: Leaders, on the ground priest and religious, lay faithful. The ripple of impact.

Systematic way for survivors who wish to explore finance compensation to progress with this. Non defensive processes.

**Supportive interventions with perpetrators. Research shows that perpetrators are less likely to reoffend if treated appropriately, establishing better child protection.**

## Reflections

**What am I already doing well in  
relation to child protection and victim  
outreach?**

## Reflections

What am I already doing well in relation to child protection and victim outreach?

**What do I need to improve within my community in relation to child protection and victim outreach?**

## Reflections

What am I already doing well in relation to child protection and victim outreach?

What do I need to improve within my community in relation to child protection and victim outreach?

**What resources or support do I need to implement these changes and improvements?**

# Questions and Answers



*TOWARDS HEALING*